



Certificate of Conformity

Certification Body:



**BUREAU
VERITAS**

Bureau Veritas Australia Pty Ltd
11/500 Collins Street
Melbourne VIC, 3000
Ph: 1800 855 190
www.bureauveritas.com.au

Certificate Holder:

WoodEvo.

NaturalTech Pty Ltd
3 Bass Court
Keysborough, VIC, 3173
Ph: 1300 966 338
www.woodevo.com.au

Certificate number: CM70209

THIS IS TO CERTIFY THAT

WoodEvo Castellated Cladding System

Type and/or use of product:

WoodEvo Castellated Cladding system is suitable for use as cladding on external walls in commercial and residential buildings on both timber frame and steel frame.

Description of product:

WoodEvo Castellated Cladding system is a timber composite cladding board installed vertically as a cavity battened solution onto horizontal steel top-hat battens.

COMPLIES WITH THE FOLLOWING BCA PROVISIONS AND STATE OR TERRITORY VARIATION(S)

BCA 2022 Amdt.2

	Volume One		Volume Two	
Performance Requirement(s)	B1P1(1), limited to (2)(c)	Structural reliability	H1P1(1), limited to (2)(c)	Structural reliability and resistance
	F3P1	Weatherproofing	H2P2	Buildings in flood areas
Deemed-to-Satisfy Provision(s):	G5D3	Protection - residential buildings	H7D4(2)(a) 13.2.2 as much as it is part of a system contributing to the total R-Value as required by 13.2.5 (walls)	Construction in bushfire prone areas
	J4D3 as much as it is part of a system contributing to the total R-Value as required by J4D6 (walls).	Thermal construction - general		
State or territory variation(s):	NSW J4D3		QLD H7D4 SA H7D4 NT 13.2.2 TAS 13.2.2	Construction in bushfire prone areas
	NT J4D3			

Sam Guindi – Product Certification Manager
Bureau Veritas Australia Pty Ltd

Harley Parkes - Unrestricted Building Certifier
Jensen Hughes Pty Ltd

Date of issue: 11 February 2026

Date of expiry: 11 February 2029





Certificate of Conformity

SUBJECT TO THE FOLLOWING LIMITATIONS AND CONDITIONS AND THE PRODUCT TECHNICAL DATA IN APPENDIX A AND EVALUATION STATEMENTS IN APPENDIX B

Limitations and conditions:

1. WoodEvo Castellated Cladding System shall be installed in accordance with WoodEvo Castellated Cladding System – Design and Installation Guide Version 1, dated October 2025.
2. WoodEvo Castellated Cladding is suitable for use in non-cyclonic regions up to the following pressures: +2kPa / -4.0kPa.
3. WoodEvo Castellated Cladding has not been tested for non-combustibility and is only suitable for use in buildings of Type C construction and Class 1 and 10a buildings.
4. WoodEvo Castellated Cladding System has been tested against the requirements of Appendix F BUSHFIRE-RESISTING TIMBER of AS3959:2018 and is suitable for use in Bushfire Prone Areas up to and including BAL-29.

Building classification/s:

Volume 1 – Class 2 to Class 9 buildings
Volume 2 – Class 1 and Class 10 buildings

Scope of certification: The CodeMark Scheme is a building product certification scheme. The rules of the Scheme are available at the ABCB website www.abcb.gov.au. This Certificate of Conformity is to confirm that the relevant requirements of the Building Code of Australia (BCA) as claimed against have been met. The responsibility for the product performance and its fitness for the intended use remain with the certificate holder. The certification is not transferrable to a manufacturer not listed on Appendix A of this certificate.

Disclaimer: The Scheme Owner, Scheme Administrator and Scheme Accreditation Body do not make any representations, warranties or guarantees, and accept no legal liability whatsoever arising from or connected to, the accuracy, reliability, currency or completeness of any material contained within this certificate; and the Scheme Owner, Scheme Administrator and Scheme Accreditation Body disclaim to the extent permitted by law, all liability (including negligence) for claims of losses, expenses, damages and costs arising as a result of the use of the product(s) referred to in this certificate.

APPENDIX A – PRODUCT TECHNICAL DATA

A1 Type and intended use of product

As above.

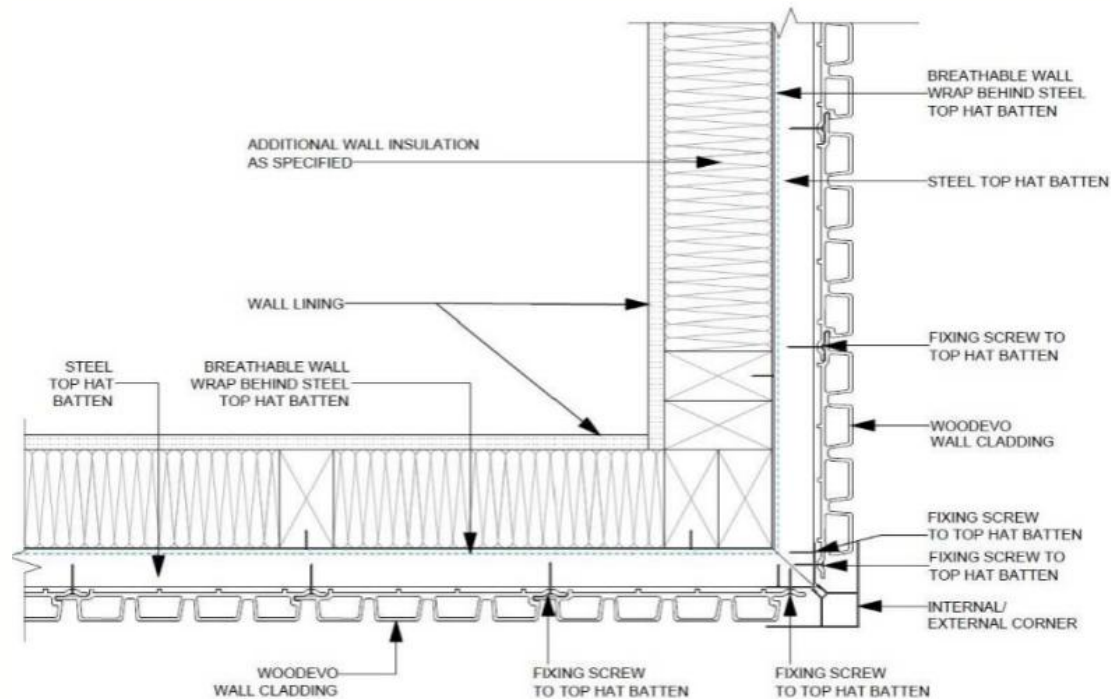
A2 Description of product

As above.

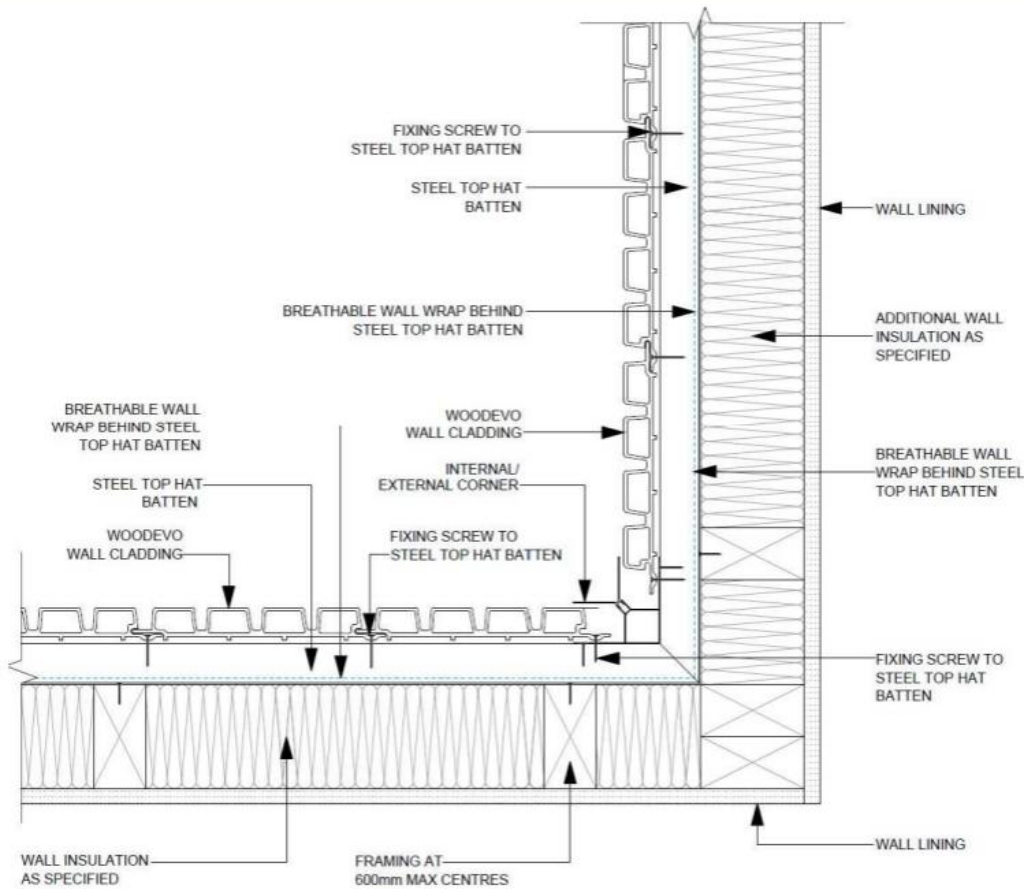
A3 Product specification

WoodEvo Castellated Cladding System is available in the following board sizes:

- 1) WPC Cladding board 216mm x 33mm x 2900mm
- 2) WPC Cladding board 216mm x 33mm x 3600mm
- 3) WPC Cladding board 216mm x 33mm x 4200mm



WoodEvo Castellated Cladding system - D&I Guide, Version 1, October 2025: Version 1, October 2025: External Corner Installation.



WoodEvo Castellated Cladding system - D&I Guide, Version 1, October 2025: Version 1, October 2025: Internal Corner Installation.

And can be used with the following trims;

- Aluminum J Trim: 43mm (top) x 70mm(bottom) x 36mm x 4200mm
- Aluminum Corner Trim: 63 x 63mm x 4200mm
- Aluminum Control J Joint Trim: 50 x 60mm



Certificate of Conformity

A4 Manufacturer and manufacturing plant(s)

Chengbei Industrial Zone, Huzhou, Huangshan city, AnHui, China

A5 Installation requirements

Details on installation can be found in the following documents:

- WoodEvo Castellated Cladding System – Design and Installation Guide Version 1, dated October 2025.

A6 Other relevant technical data

WoodEvo Castellated CLADDING Technical Data Sheet dated 20 December 2025.

APPENDIX B – EVALUATION STATEMENTS

B1 Evaluation methods BCA 2022 Amdt.2

Performance

1. Structure

A2G2(2)(a) / A5G3(1)(d) - A report issued by an Accredited Testing Laboratory (Ian Bennie & Associates NATA Accreditation No.2371)

2. Weatherproofing

A2G2(2)(a) / A5G3(1)(d) - A report issued by an Accredited Testing Laboratory (Ian Bennie & Associates NATA Accreditation No.2371)

3. Energy Efficiency

A2G2(2)(a) / A5G3(1)(e) – A report from a professional engineer or other appropriately qualified person (Acronem Consulting Australia)

Deemed-to-Satisfy Provision(s)

4. Bushfire Construction

A2G3(2)(a)/A5G3(1)(d) - A report issued by an Accredited Testing Laboratory (AWTA, NATA Accreditation No. 983)

B2 Reports

- Ian Bennie & Associates, AS4040.2-1992 (R2016) Methods of testing sheet roof and wall cladding, Method 2: Resistance to wind pressures for non-cyclone region, Report No. 2025-067-S3, dated 30 October 2025.**
This report provides the results of WoodEvo Castellated Cladding System testing to AS4040.2-1992 (R2016) and determines that the product is suitable for the following pressures: +2kPa / -4.0kPa.
- Ian Bennie & Associates, AS4284-2008: Testing of Building Façades, Report No. 2025-067-S3, dated 30 October 2025.**
This report provides the results of WoodEvo Castellated Cladding System testing to AS4284-2008 and determines that the product “passed” the Weatherproofing Verification Methods F3V1 and H2V1.
- AWTA Product Testing, AS/NZS 3837-1998 Method of test for head and smoke release rates for materials and products using an oxygen consumption calorimeter, Report No. 23-003308, dated 28 August 2023.**
This report provides the results of WoodEvo Castellated Cladding System testing to AS/NZS 3837-1998 and determines that the product “Complies” with the requirements of AS3959:2018, Appendix F2 “Bushfire Resistant Timber”.
- Acronem Consulting Australia, AS 4859:2018 Thermal insulation materials for buildings incorporating the effect of thermal bridging, Report No. W251008a, dated 8 October 2025.**
This report provides the results of WoodEvo Castellated Cladding System testing to AS 4859:2018 and determine that the product achieved a Total Thermal Resistance of Rt (m2.K/W) 2.65 for Winter and 2.5 for Summer when installed to a timber framed building with Vapour Permeable Sarking (0.9/0.9).
- Acronem Consulting Australia, AS 4859:2018 Thermal insulation materials for buildings incorporating the effect of thermal bridging, Report No. W251008b, dated 8 October 2025.**
This report provides the results of WoodEvo Castellated Cladding System testing to AS 4859:2018 and determine that the product achieved a Total Thermal Resistance of Rt (m2.K/W) 2.01 for Winter and 1.88 for Summer when installed to a steel framed building with Vapour Permeable Sarking (0.9/0.9).